

Supplemental Table of Contents

Supplemental Figure 1: Liver histology of all *Pkhd1^{fl/fl};UBC-Cre^{ER}* and *Pkhd1^{fl/+};UBC-Cre^{ER}* mice evaluated by this method

Supplemental Figure 2: Additional information for *UBC-Cre^{ER}* model

Supplemental Figure 3: Kidney histology of all *Pkhd1^{fl/fl};Pkd1^{fl/+};Pax8^{rtTA}TetO-Cre* mice in the study

Supplemental Figure 4: Males from contemporaneous mouse cohort of *Pkhd1^{fl/fl};UBC-Cre^{ER}*, *Pkhd1^{fl/fl};Pkd1^{fl/+};UBC-Cre^{ER}* and *Pkhd1^{fl/fl};Pkd1^{F/H}-BAC UBC-Cre^{ER}*

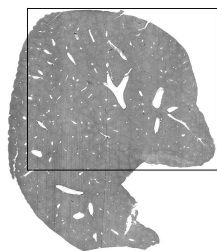
Supplemental Figure 5: Females from contemporaneous mouse cohort of *Pkhd1^{fl/fl};UBC-Cre^{ER}*, *Pkhd1^{fl/fl};Pkd1^{fl/+};UBC-Cre^{ER}* and *Pkhd1^{fl/fl};Pkd1^{F/H}-BAC UBC-Cre^{ER}*

Supplemental Figure 1

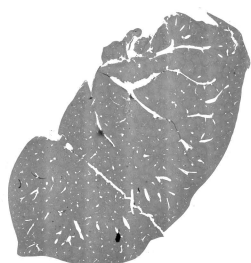
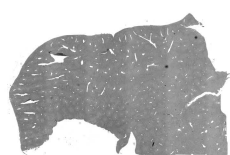
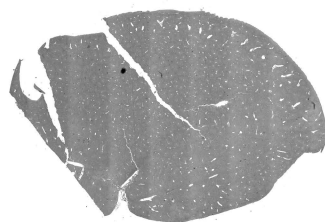
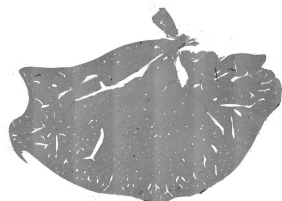
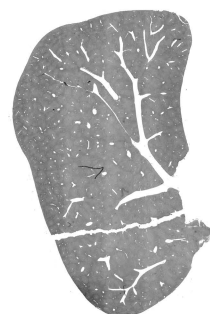
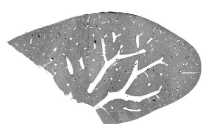
***Pkhd1*^{fl/+}; *UBC-Cre*^{ER}**

male

female



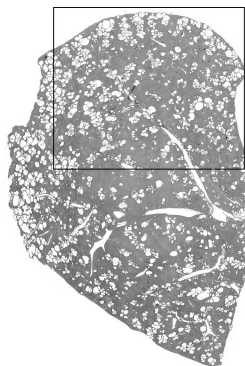
*



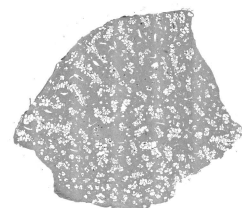
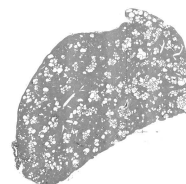
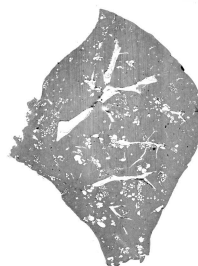
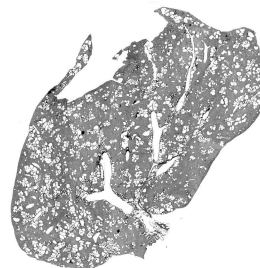
***Pkhd1*^{fl/fl}; *UBC-Cre*^{ER}**

male

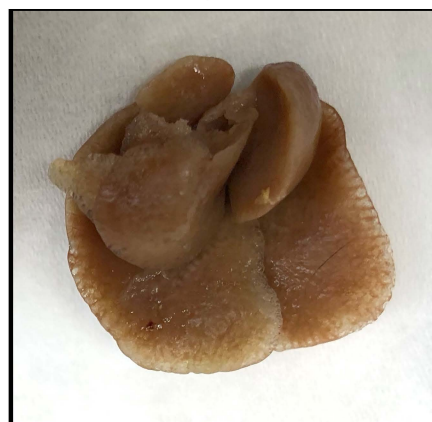
female



*



Gross appearance:
Pkhd1^{fl/fl}; *UBC-Cre*



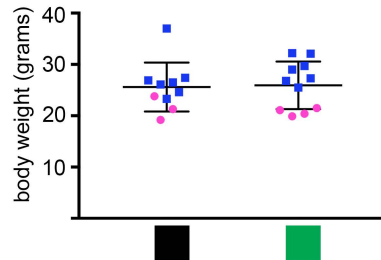
10mm

* shown in Figure 1

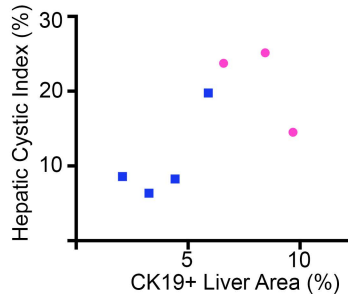
Supplemental Figure 2

■ *Pkhd1^{fl/+};UBC-Cre^{ER}*
■ *Pkhd1^{fl/fl};UBC-Cre^{ER}*

A



B

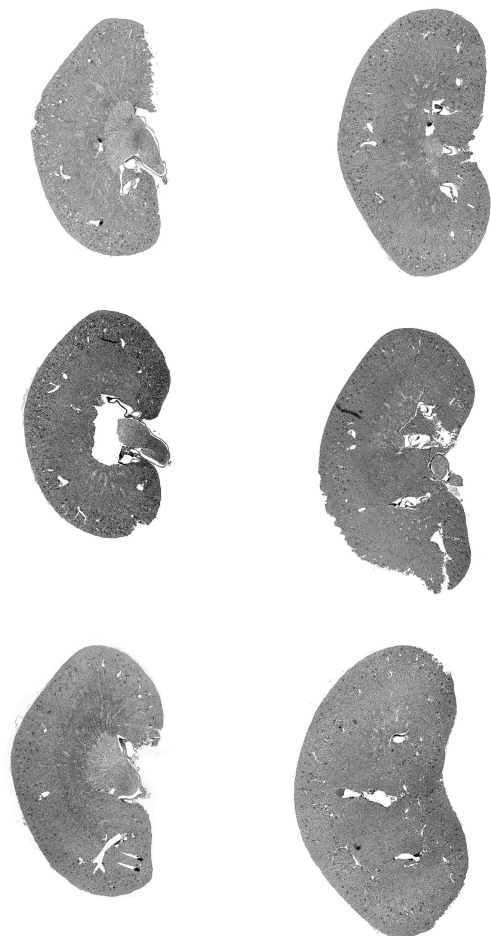


Supplemental Figure 3

Pkhd1^{fl/+};Pkd1^{fl/+};Pax8^{rtTA};TetO-Cre

female

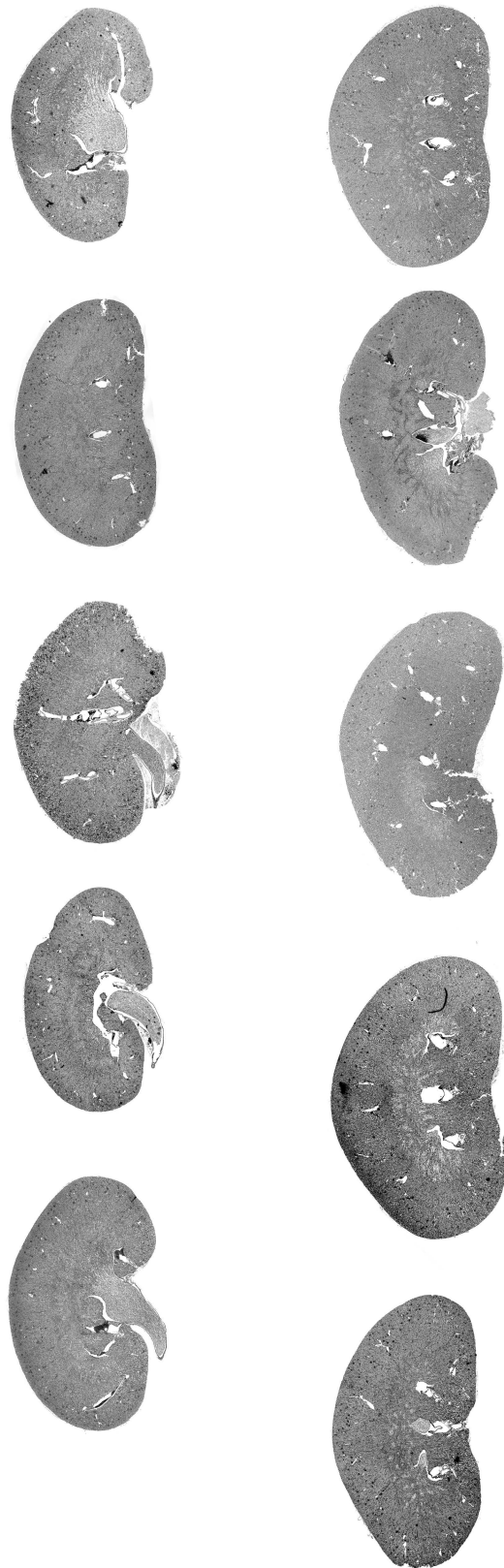
male



Pkhd1^{fl/fl};Pkd1^{fl/+};Pax8^{rtTA};TetO-Cre

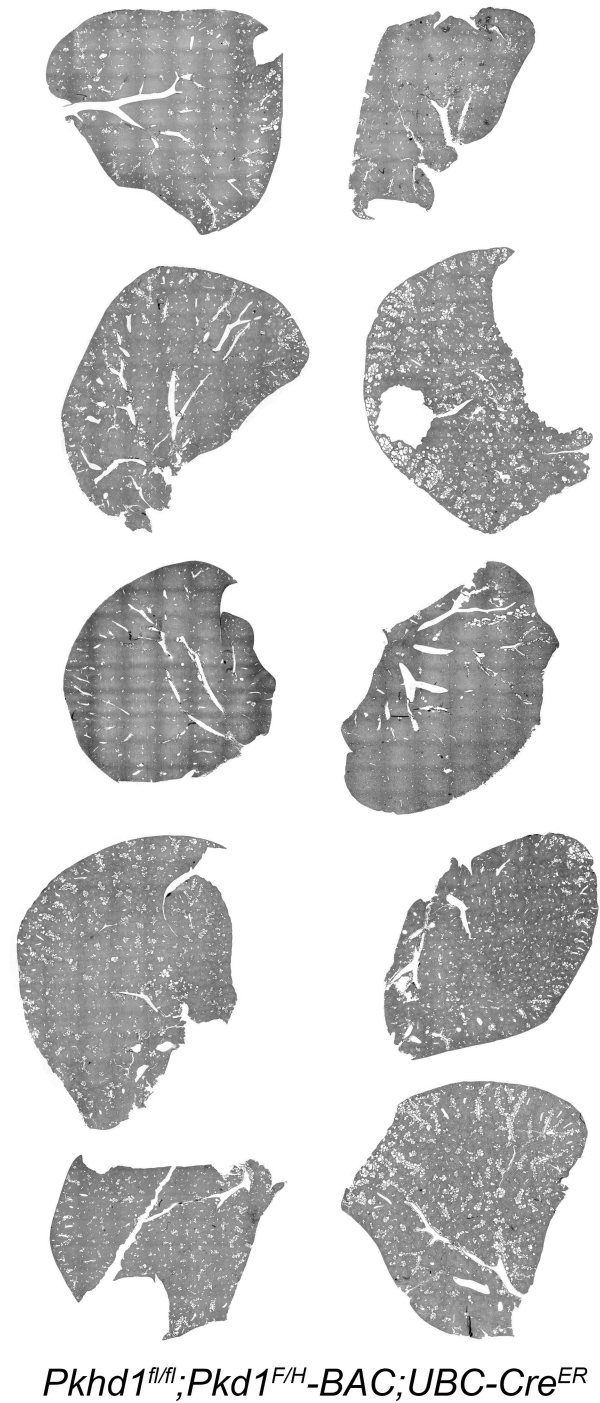
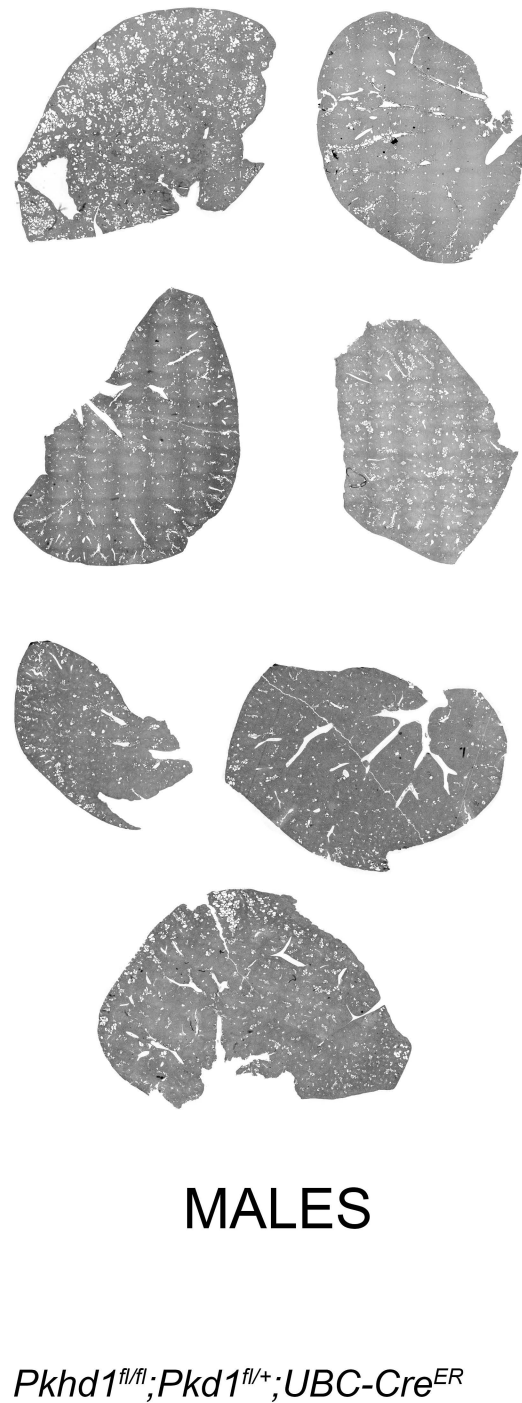
female

male



5mm

Supplemental Figure 4



Supplemental Figure 5

