

Supplemental Material

Supplemental Figure 1. mRNA levels of *Twist1* in CD3⁺ T lymphocytes from naïve spleens and obstructed kidneys (“UUO”).

Supplemental Figure 2. The weights of UUO kidneys from WT and *Twist1* TKO mice.

Supplemental Figure 3. The gating strategy for excluding cellular debris and analyzing viable CD4⁺ and CD8⁺ T cells from UUO kidneys at day 14.

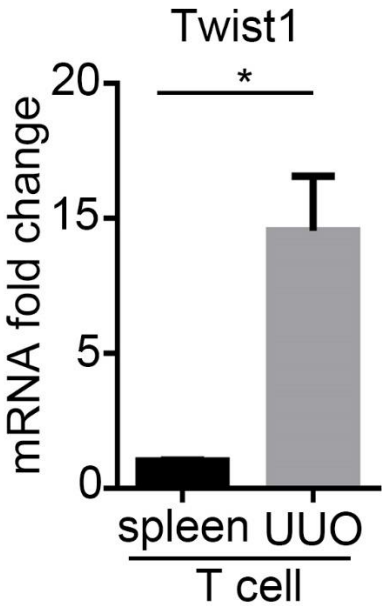
Supplemental Figure 4. Absolute numbers of neutrophils and monocytes/macrophages from *Twist1* TKO and WT UUO kidneys are similar. (A) Representative plots for CD11b⁺Ly6G⁺ neutrophils from WT and *Twist1* TKO UUO kidneys. (B) Absolute numbers of CD11b⁺Ly6G⁺ neutrophils per mg of WT and *Twist1* TKO kidney after UUO (n= 7-8). (C) Representative plots for CD11b⁺CD64⁺ monocytes/macrophages from WT and *Twist1* TKO UUO kidneys. (D) Absolute numbers of CD11b⁺CD64⁺ monocytes/macrophages per mg of WT and *Twist1* TKO kidney after UUO (n= 7-8). Data represent the mean ± SEM. *Twist1* TKO, CD4-Cre⁺ *Twist1*^{fl/fl}. WT, wild-type.

Supplemental Figure 5. No differences in migratory capacity between WT and *Twist1* TKO T cells (n=3-6). Data represent the mean ± SEM. **p*<0.05. *Twist1* TKO, CD4-Cre⁺ *Twist1*^{fl/fl}. WT, wild-type.

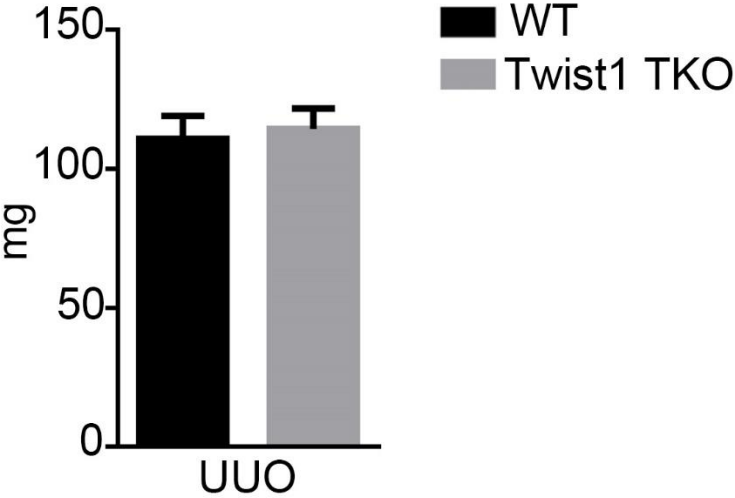
Supplemental Figure 6. Splenic T cells numbers in WT and *Twist1* TKO mice after UUO are similar. (A) Representative plots for CD4⁺ and CD8⁺ T cell subsets from WT and *Twist1* TKO spleens. (B) Absolute numbers of splenic CD4⁺ and CD8⁺ T cells per mg of WT and *Twist1* TKO spleens (n= 6). *Twist1* TKO, CD4-Cre⁺ *Twist1*^{fl/fl}. WT, wild-type.

Supplemental Figure 7. Verification of TNF deficiency in TNF T cell knockout (TNF TKO) mice. (A) Representative flow plots of CD19 versus CD45, CD4 versus CD8 staining on single cell suspensions from spleens of naïve WT and TNF TKO mice. (B) mRNA expression for TNF in T lymphocyte subsets, CD4⁺ and CD8⁺ T cells, B cells, whole kidney, and heart from WT and TNF TKO animals (n= 4). Data represent the mean ± SEM. **p*< 0.05. TNF TKO, CD4-Cre⁺ TNF^{fl/fl}. WT, wild-type.

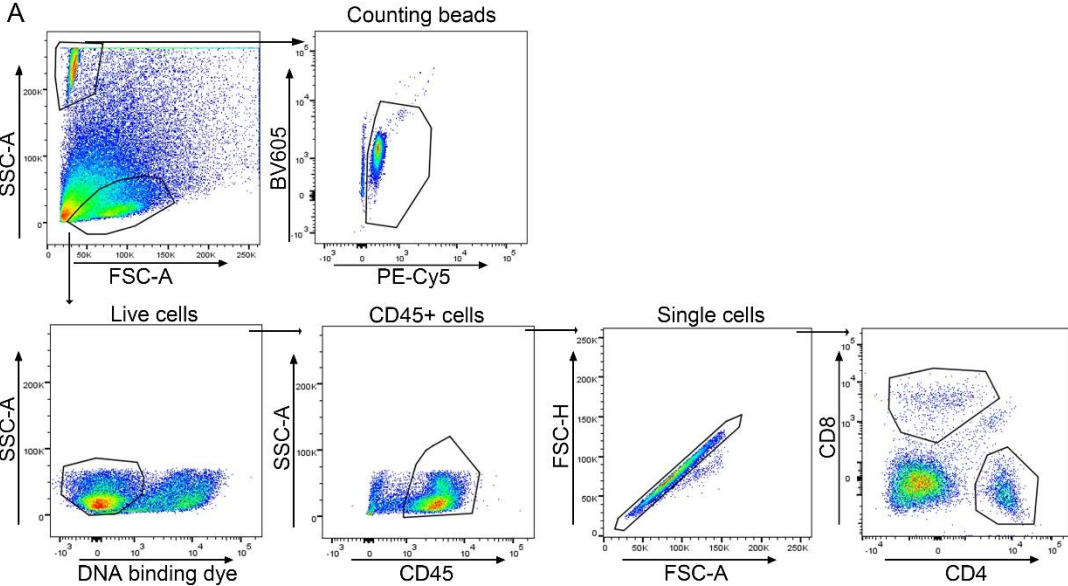
Supplemental Figure 1. mRNA levels of Twist1 in CD3⁺ T lymphocytes from naïve spleens and obstructed kidneys (“UUO”).



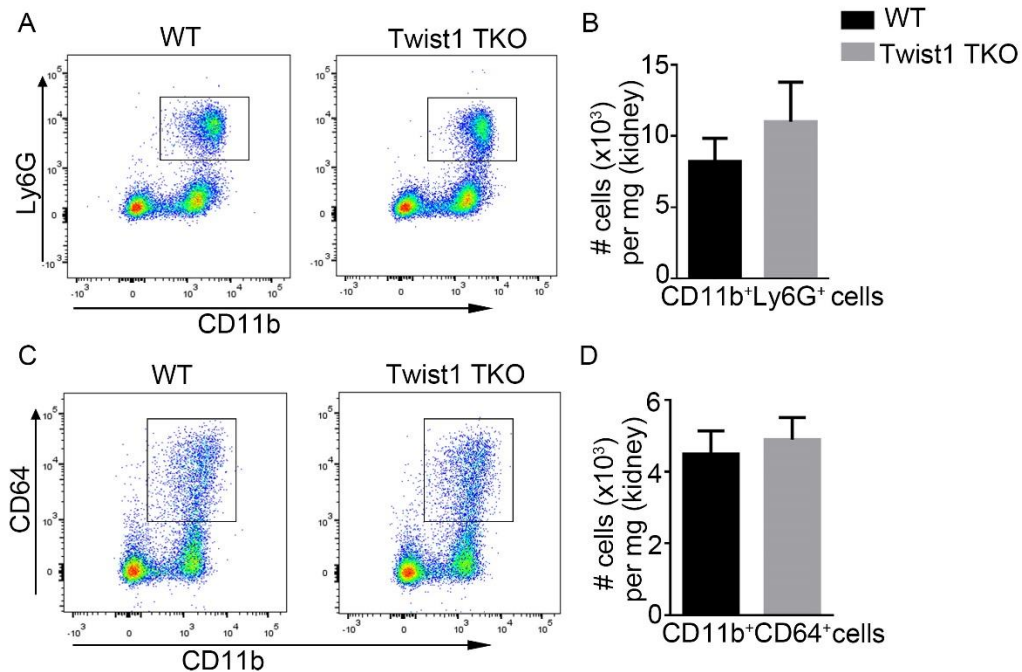
Supplemental Figure 2. The weights of UUO kidneys from WT and Twist1 TKO mice.



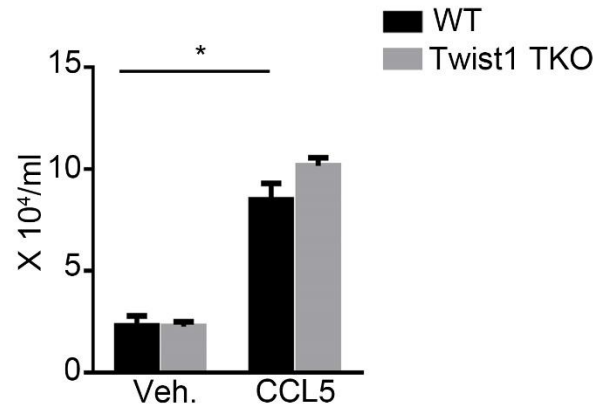
Supplemental Figure 3. The gating strategy for excluding cellular debris and analyzing viable CD4+ and CD8+ T cells from UUO kidneys at day 14.



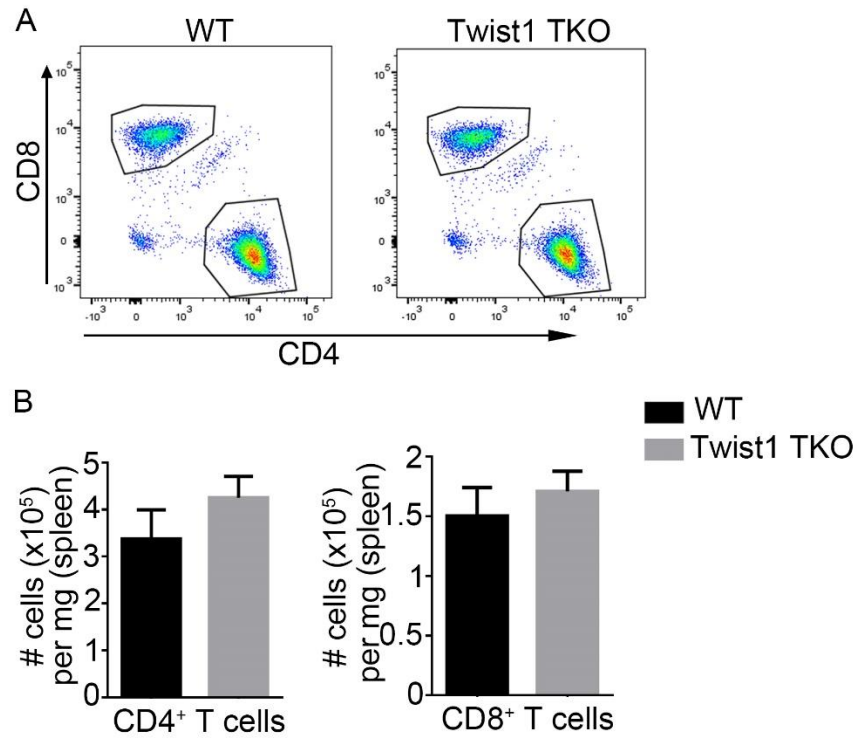
Supplemental Figure 4. Absolute numbers of neutrophils and monocytes/macrophages from Twist1 TKO and WT UO kidneys are similar. (A) Representative plots for CD11b⁺Ly6G⁺ neutrophils from WT and Twist1 TKO UO kidneys. (B) Absolute numbers of CD11b⁺Ly6G⁺ neutrophils per mg of WT and Twist1 TKO kidney after UO (n= 7-8). (C) Representative plots for CD11b⁺CD64⁺ monocytes/macrophages from WT and Twist1 TKO UO kidneys. (D) Absolute numbers of CD11b⁺CD64⁺ monocytes/macrophages per mg of WT and Twist1 TKO kidney after UO (n= 7-8). Data represent the mean± SEM. Twist1 TKO, CD4-Cre⁺ Twist1^{fl/fl}. WT, wild-type.



Supplemental Figure 5. No differences in migratory capacity between WT and Twist1 TKO T cells (n=3-6). Data represent the mean \pm SEM. * $p < 0.05$. Twist1 TKO, CD4-Cre⁺ Twist1^{fl/fl}. WT, wild-type.



Supplemental Figure 6. Splenic T cells numbers in WT and Twist1 TKO mice after UUU are similar. (A) Representative plots for CD4⁺ and CD8⁺ T cell subsets from WT and Twist1 TKO spleens. (B) Absolute numbers of splenic CD4⁺ and CD8⁺ T cells per mg of WT and Twist1 TKO spleens (n= 6). Twist1 TKO, CD4-Cre+ Twist1^{fl/fl}. WT, wild-type.



Supplemental Figure 7. Verification of TNF deficiency in TNF T cell knockout (TNF TKO) mice. (A) Representative flow plots of CD19 versus CD45 and CD4 versus CD8 staining on single cell suspensions from spleens of naïve WT and TNF TKO mice. (B) mRNA expression for TNF in T lymphocyte subsets, CD4⁺ and CD8⁺ T cells, B cells, whole kidney, and heart from WT and TNF TKO animals (n= 4). Data represent the mean± SEM. **p*< 0.05. TNF TKO, CD4-Cre⁺ TNF^{fl/fl}. WT, wild-type.

