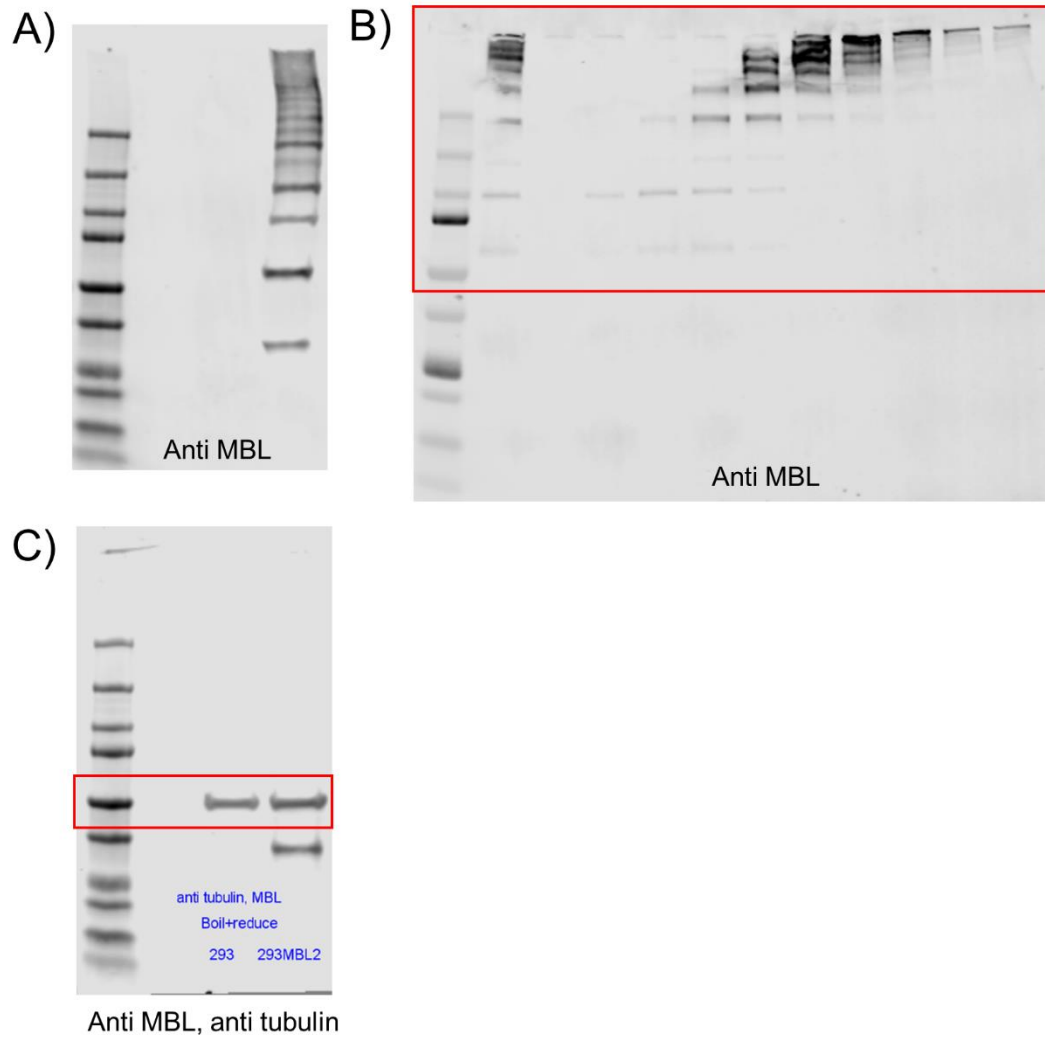
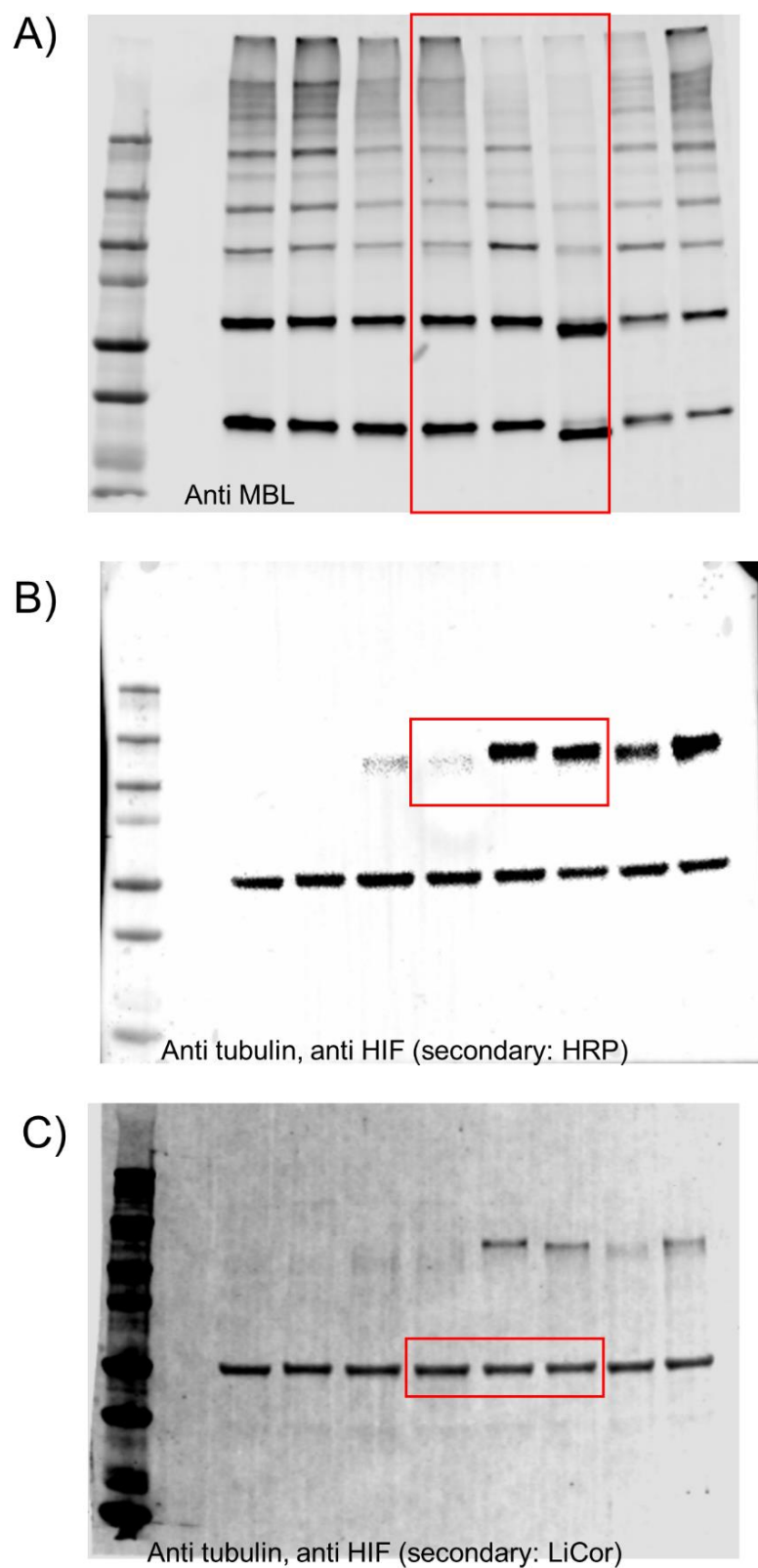


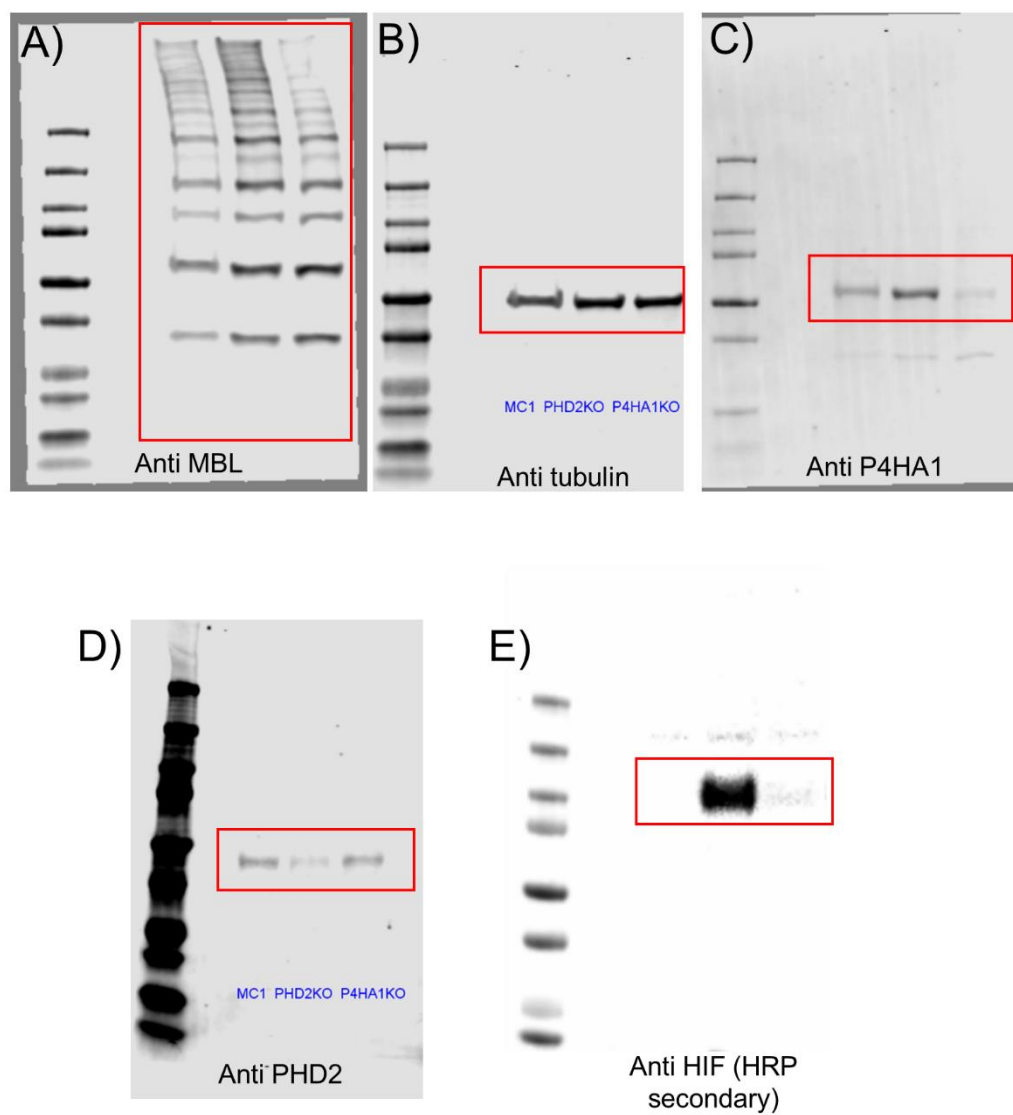
Supplementary Figure 1: Representative Western blot showing the distribution of MBL in normal human serum (A/A) or human serum from an individuals with a genetic variant (B/C) and the secreted MBL from 293 MBL2 cells. 2 μ l of serum and 6 μ l of supernatant from 293 MBL2 cells was added to the wells.



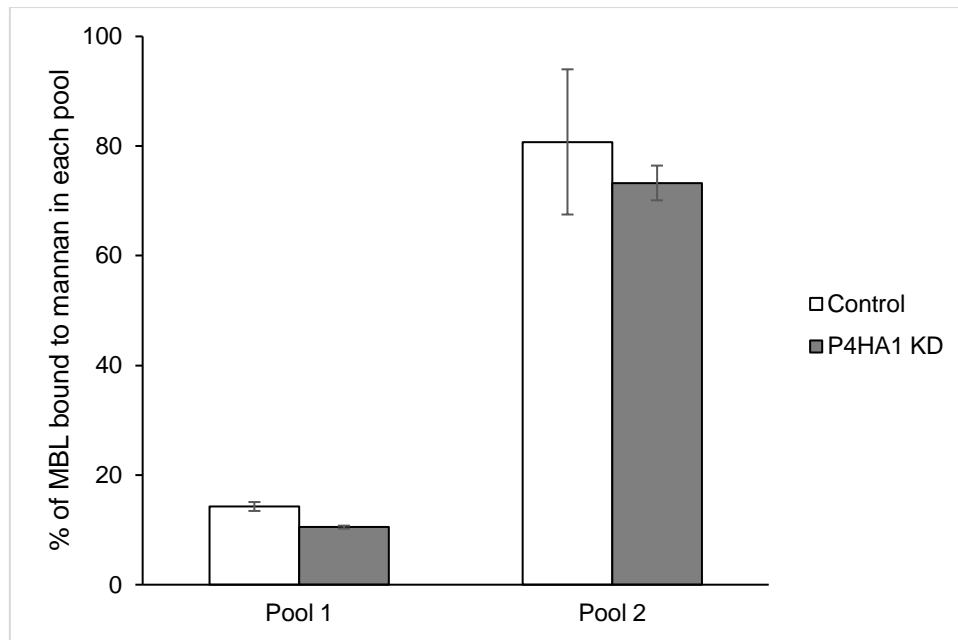
Supplementary Figure 2: Western blot with ladder for the blots used in Figure 1A and 1B. The red box represents the cropped region used in the manuscript.



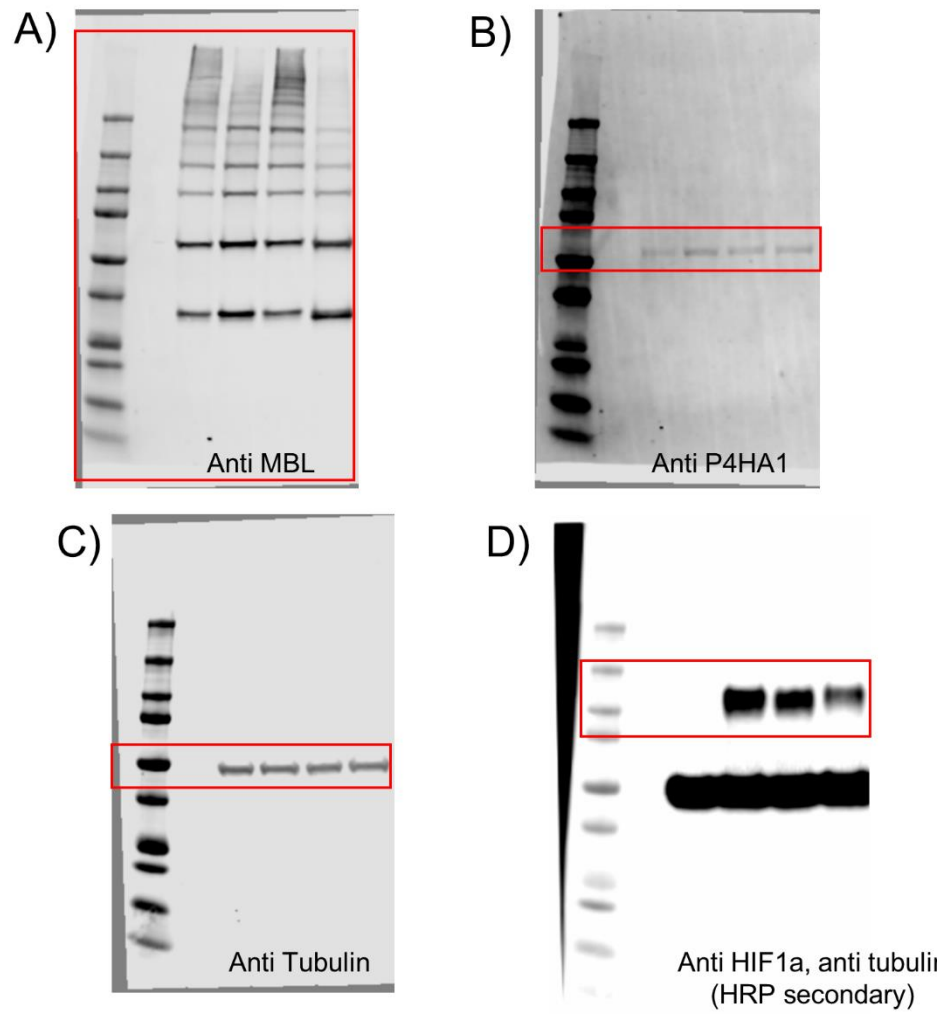
Supplementary Figure 3: A-C) Western blot with ladder for the blots used in Figure 2. The red box represents the cropped region used in the manuscript.



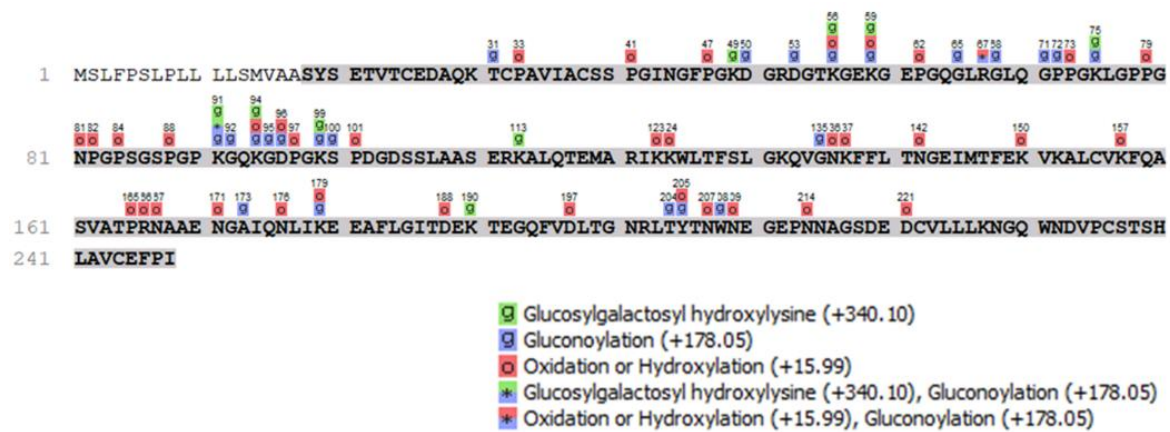
Supplementary Figure 4: Western blot with ladder for the blots used in Figure 3. The red box represents the cropped region used in the manuscript.



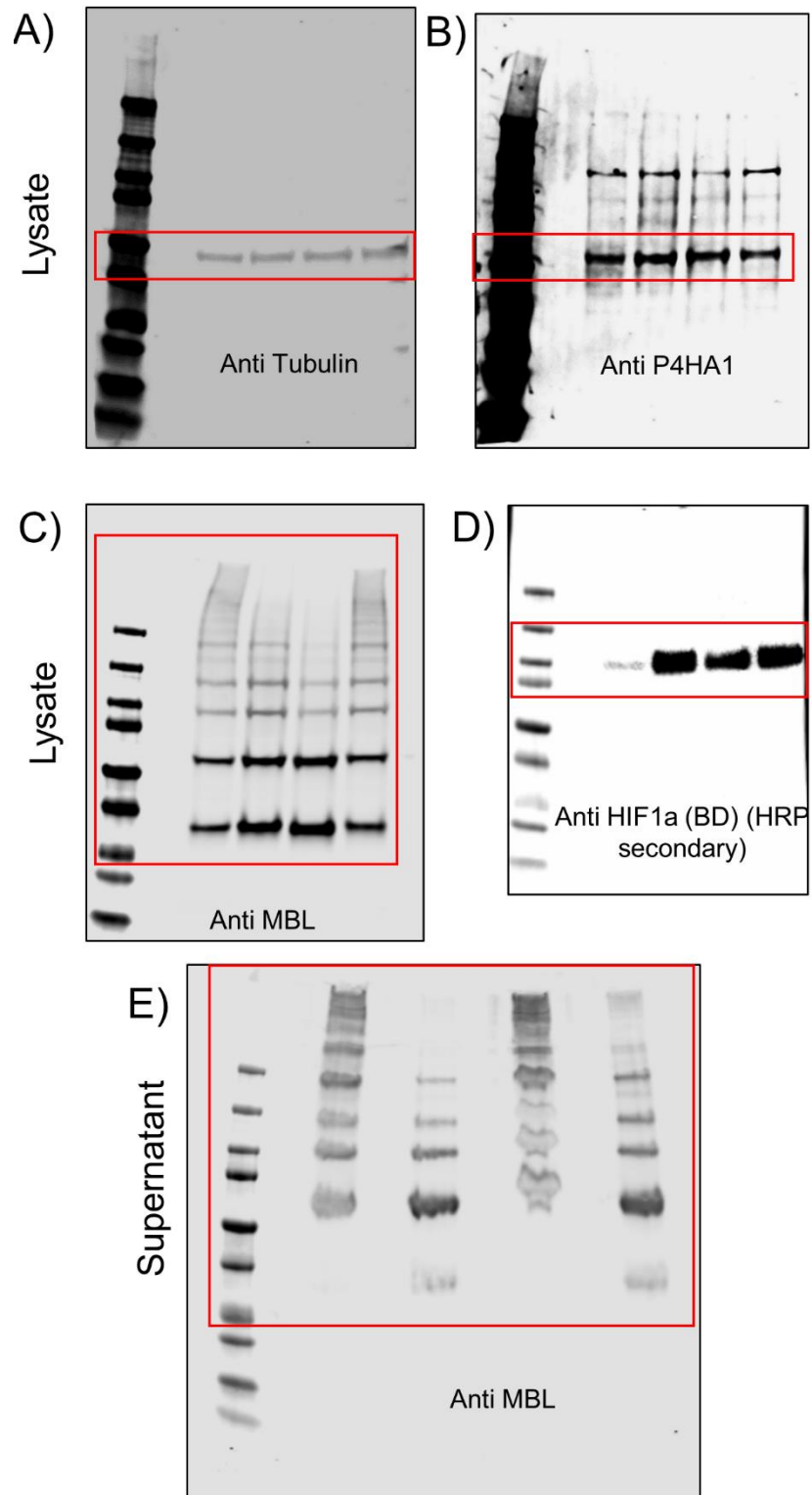
Supplementary Figure 5: Proportion of MBL (%) present in pool 1 (F1-F5) and pool 2 (F6-F10) (detected by capture antibody) that binds to mannan coated plates.



Supplementary Figure 6: Western blot with ladder for the blots used in Figure 4. The red box represents the cropped region used in the manuscript.



Supplementary Figure 7: Mass spectrometry analysis of secreted recombinant MBL. MBL protein sequence with post-translational modifications highlighted above the residues. Grey region shows the coverage of peptides in the MBL which was detected using mass spectrometry.



Supplementary Figure 8: Western blot with ladder for the blots used in Figure 5. The red box represents the cropped region used in the manuscript.